

Meet the Year 2 team!



Mrs Cudmore

Class Teacher
Mon - Weds



Mrs Cowles

Class Teacher
Thurs - Fri



Mrs Mably

Teaching Assistant

How will Year 2 feel different for my child?

GROWING INDEPENDENCE – We encourage the children to become more independent in their learning and will trust them to take on roles within the class. These jobs will change each half term so that each child gets to experience different responsibilities throughout the year.

TRAYS – We will provide any equipment the children will need. It will be each child's responsibility to look after their equipment and keep it safe in their drawer.

A4 BOOKS – The children will complete most of their English and topic work in A4 books. They will be encouraged to join all their writing and take pride in the presentation of their work. First impressions count!

HOMEWORK – The children will continue to have weekly spellings to learn and we ask that you read daily with your child at home. This has such a positive impact on their progress and enables them to really develop their fluency and expression when reading aloud to an adult. The children will also be given a piece of maths homework each week to reinforce their learning. This is an opportunity for your child to practise new skills taught and to show you what they can do. Please feel free to come and ask us questions if you are unsure about any of the maths work set. The images and strategies that we use to support the teaching of maths has changed considerably since we were taught in school. We also set one project per term linked to our class topic. Details about each project will be shared in our termly curriculum booklet which we will send out at the beginning of each term.

How will Year 2 feel different for my child?

SCHOOL TRIPS – We aim to provide the children with a range of educational and exciting trips linked to each of our topics throughout the year. Previous trips we have been on include exploring our local area, Bodmin Fire Station, Recycling Centre, Eden Project, Restormel Castle, St Minver Church and the Polzeath Conservation Centre. ~Thank you to the PTA whose kind donation of £100 helps to facilitate these trips.
WE HOPE TO BE ABLE TO RUN SOME OF THESE TRIPS WHEN IT IS SAFE TO DO SO!

GOLDEN TIME –The children are rewarded for all their hard work and good behaviour during the week with some golden time. During this session, the children can choose what they would like to do.

SEATING ARRANGEMENTS – The children are grouped in many different ways throughout the year depending on the topics we are teaching and the activities we are carrying out.

LIBRARY – The children will be able to choose a book from the library to take home and share with their family.

THE READING TREE – We encourage regular reading at home. There are half termly rewards for the children to work towards.

END OF THE DAY – The children finish school at 3.10pm!

Year 2 Topics!

London

London Landmarks



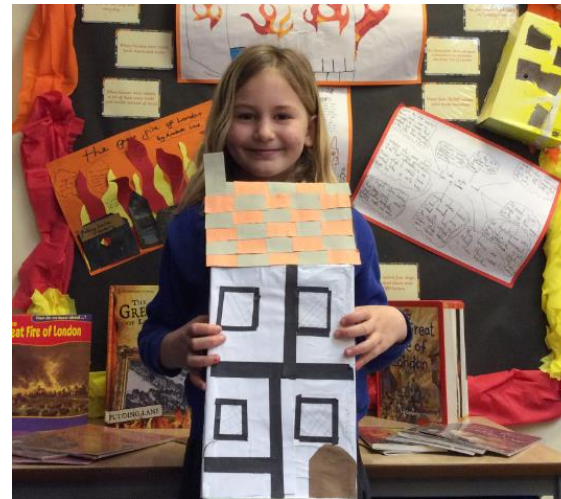
Paddington Bear



The Great Fire of London



Samuel Pepys



Tudor Houses



The Gunpowder Plot

Year 2 Topics!

Castles and Dragons



Restormel Castle

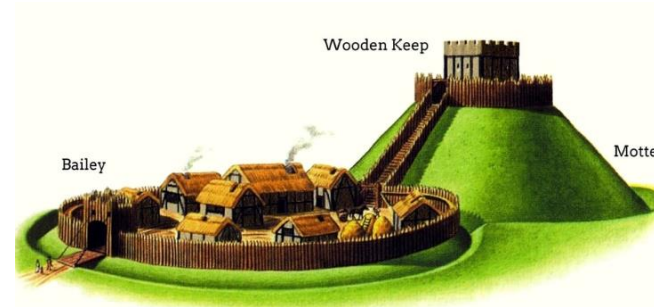
Battle of Hastings 1066



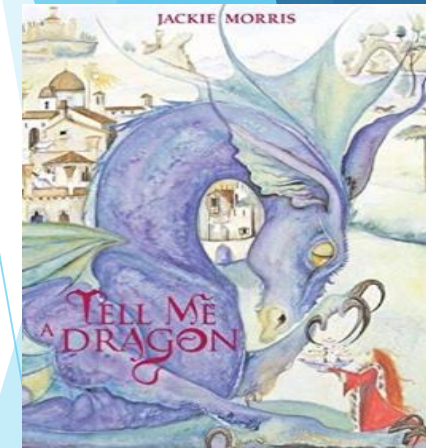
Bayeux Tapestry



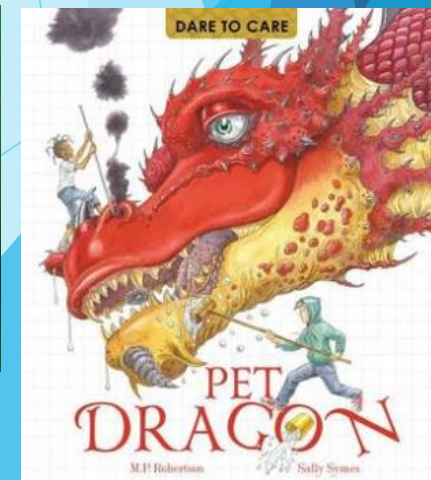
Termly Challenge



Motte and Bailey Castle



Castle and Sun By Paul Klee



Year 2 Topics!

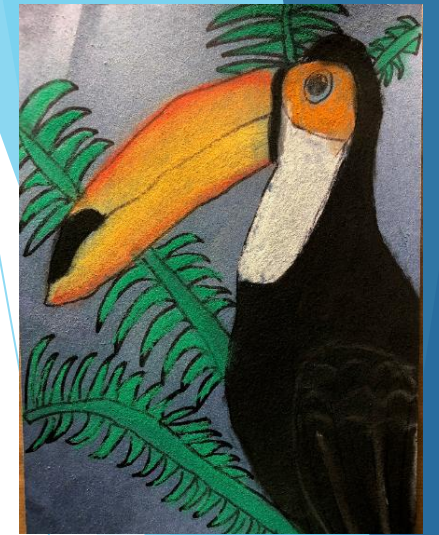
Explorers



The Rainforest



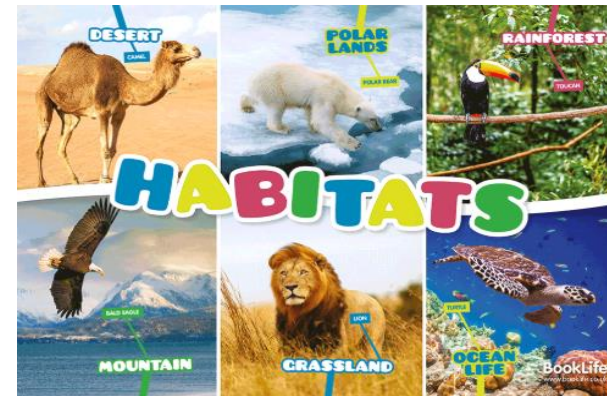
Eden Project



Toucan Art



The Recycling Centre



Habitats & Plants



Rainforest Cookies



Christopher Columbus



SATs!

At the end of Year 2, children will take SATs in:

- Reading
- English grammar, punctuation and spelling
- Maths

The tests will take place in May and will help to inform our Teacher Assessment.
PLEASE AVOID HOLIDAYS DURING THIS TIME.

We hope to be able to hold a meeting regarding this at the beginning of March to give you more information.

Attendance

Consistent attendance is so important. Of course children must stay at home when they are ill, but we encourage you to make every effort to get them to school if you possibly can. We would like to use this opportunity to say that, when in doubt, be reassured that we will ALWAYS contact you if your child is unwell and needs to go home.

Missing a day's lessons can mean that your child will find it difficult to catch up, but can also mean that they return to school feeling unsettled, which has a negative impact on wellbeing and academic progress.

Arriving at school on time is equally important. Missing the beginning of the school day can cause lots of problems! Please be aware that late arrivals after the register has closed will be recorded as unauthorised absence.

How can I help my child at home?

- Praise and encourage!
- Ensure your child has the best possible attendance at school and arrives at school on time.
- Support your child with any homework tasks. Maths and Spellings are given out on Monday of each week to be returned on Friday. Work together on the termly challenge.
- Listen to your child read every day!
- Help your child to learn their spellings at home. Keep spelling patterns bubbling away if you can so that they can begin to transfer them to their independent writing.
- Arithmetic (e.g. times tables 2, 3, 5, 10) are always good to practise. Mathletics is another great resource that the children enjoy!
- Talk to your child about what they have learnt at school.
- Make sure your child has a good sleep and healthy breakfast every morning!
- TALK TO US IF YOU HAVE ANY CONCERNS!